

Draft 26/6/08

# **South Tipperary Social Inclusion Audit**

## **Report 3: Killenaule**



Carried out by Community Consultants Ltd.  
June 2008

# I. Area Profiles

---

## Introduction

This is the third report making up the South Tipperary Social Inclusion Audit. The first report concentrates on providing a summary of the full Audit work and findings. The second report gives the national context for social inclusion work and provides information and statistics on a countywide basis. This third and final report focuses on the local consultation processes, a review of all research reports available in relation to eight identified areas for Social Inclusion in South Tipperary and data and analysis of information in relation to the target groups named under the Local Development Social Inclusion Programme guidelines. Information about the key<sup>1</sup> community groups operating in the county is contained in appendix V.

Local Focus Sessions were held in 7 key locations across the county, namely Cashel, Cahir, Tipperary Town, Killenaule, Hollyford and Clogheen, comprising 4 urban areas and 3 rural. These locations were selected on the grounds of demographic information and also in terms of natural gravitation centres of population and services. The urban areas included their rural hinterlands and the rural areas included surrounding villages and hamlets.

In all cases the consultants worked with local community groupings, identified in the rural areas by the Community and Voluntary Forum, to host the focus sessions. The focus sessions had two clear objectives within the context of the Audit:

1. Inform local communities regarding the process and objectives of the Audit, the framework of the Cohesion process and the principles and structure of the Local Development Social Inclusion Programme – via discussion and handouts.
2. Gather local information regarding social inclusion needs and barriers in their local areas, both in terms of a) geographic/area needs and in terms of b) each Target Group identified under the LDSIP.

Sessions were held in the evenings to facilitate maximum participation and lasted for approximately 2–2.5 hours. Attendance was high in most of the areas and participation was strong – representatives of local interest and community groups indicated a clear understanding of the issues and needs in their area. Whilst levels of understanding regarding the LDSIP were varied, and indeed in some cases the understanding of social inclusion and community development work was erratic, those participating brought a wealth of experience and knowledge to the sessions. Community Consultants would like to thank the local community and voluntary groups who hosted the sessions for their work in organising these meetings.

---

<sup>1</sup> Key Community Projects for the purposes of this audit was defined as core funded projects.

## 1.6 Killenaule Area

### 1.6.1 Geographic Description

Killenaule is situated at the northeast side of Tipperary border though it is in the electoral area of Carrick-on-Suir. The town of Killenaule lies at the Southern extremity of the range of The Slieveardagh Hills — situated 17 miles from Clonmel, 10 miles from Thurles, 10 miles from Cashel and 28 miles from Kilkenny City. For this reason, Killenaule feels somewhat remote, independent and isolated from their administrative centre. It fall sunder the South Tipperary County Council area and comes under 2 VECs, two electoral regions and, until recently, 2 Leader programmes. It contains 1 primary and 1 secondary school (600 pupils). The Slieveardagh area is identified as being a particularly disadvantaged area within the county.

The village of Killenaule is the centre for many of the outlying areas such as Ballynonty Glengoole, Gortnahoe, Ballysloe, Moyglass, Ballinure Laffinsbridge, The Commons, Coalbrook Ballingarry, Grange, Fethard and hinterlands. Some, but not all of these areas have Local Area Plans (LAPs).

### 1.6.2 Killenaule and District Key Data

	<b>Number</b>	<b>% 2006</b>	<b>% 2002</b>
Age Dependency	2,657	34%	34%
Elderly 65+ years	981	13%	13.3%
Elderly 65+ years living alone	259	10%	9.6%
Foreign Nationals <sup>2</sup>	82	1.1%	1.2%
Temporary Households <sup>3</sup>	42	1.6%	1.2%

<sup>2</sup> Non-Irish, non-UK nationality.

<sup>3</sup> Including caravans, mobile homes and persons sleeping rough on census night.

Statistics relating specifically to the number of Travellers for each ED was not available so area totals could not be provided. However, the 2006 Census of population records 22,425 Travellers in Ireland but it is generally accepted this may be less than the real figure. The 2006 Census recorded 6 Travellers per 1,000 population in the State and in County Tipperary this was 5.1 per 1,000 population.

In County Tipperary the Traveller population was recorded at 421 persons at the time of the 2006 census. The annual count of Travellers undertaken by South Tipperary County Council in November, 2006 estimates there were 134 families in the County. County Tipperary has 51% of Travellers aged 0 to 14 years, 47 % aged 15 to 64 years and 2 % aged 65 years and over.

### Population

The total population of Killenaule and district is 7,737, having risen only slightly between 1996 and 2006 (+215). Most of this increase took place between 2002 and 2006. Whilst there has been an overall increase in population across south Tipperary, Killenaule village (-9.7%), Ballingarry (-3.8%), Kilcooly (-5.5%), Kilvemnon (-2.1%) and Modeshil (-4.8%) have seen a decrease in population over the last 5 years. Noticeably, Killenaule's female population has declined significantly, from 652 in 1996 to 561 in 2006 (-13.7%), while the male population has remained relatively static (-5.8%). Percentage population change for all EDs during the years from 1996 – 2006 can be read in Appendix II.

ED	Population			Males			Females		
	2006	2002	1996	2006	2002	1996	2006	2002	1996
Cooleagh	519	443	429	257	227	221	262	216	208
Drangan	625	565	512	317	291	275	308	274	237
Killenaule	1,180	1,307	1,285	619	657	633	561	650	652
Ballingarry	710	738	734	358	373	368	352	365	366
Ballyphilip	400	370	356	217	197	193	183	173	163
Buolick	588	578	565	297	276	280	291	302	285
Crohane	223	199	215	121	107	120	102	92	95
Farranrory	473	451	481	270	250	270	203	201	211
Fennor	554	524	559	292	276	296	262	248	263
Kilcooly	290	307	289	149	160	147	141	147	142
Kilvemnon	374	382	366	200	204	198	174	178	168
Modeshil	314	330	324	167	173	170	147	157	154
Mullinahone	813	764	744	432	414	404	381	350	340
New Birmingham	483	397	456	241	203	248	242	194	208
Poyntstown	191	185	207	107	107	109	84	78	98
<b>Totals</b>	<b>7,737</b>	<b>7,540</b>	<b>7,522</b>	<b>4,044</b>	<b>3,915</b>	<b>3,932</b>	<b>3,693</b>	<b>3,625</b>	<b>3,590</b>

Killenaule and District		Population			Males			Females		
ID	ED	1996-2002	2002-2006	1996-2006	1996-2002	2002-2006	1996-2006	1996-2002	2002-2006	1996-2006
23,102	Cooleagh	3.3%	17.2%	21.0%	2.7%	13.2%	16.3%	3.8%	21.3%	26.0%
23,103	Drangan	10.4%	10.6%	22.1%	5.8%	8.9%	15.3%	15.6%	12.4%	30.0%
23,109	Killenaule	1.7%	-9.7%	-8.2%	3.8%	-5.8%	-2.2%	-0.3%	-13.7%	-14.0%
23,141	Ballingarry	0.5%	-3.8%	-3.3%	1.4%	-4.0%	-2.7%	-0.3%	-3.6%	-3.8%
23,142	Ballyphilip	3.9%	8.1%	12.4%	2.1%	10.2%	12.4%	6.1%	5.8%	12.3%
23,143	Buolick	2.3%	1.7%	4.1%	-1.4%	7.6%	6.1%	6.0%	-3.6%	2.1%
23,144	Crohane	-7.4%	12.1%	3.7%	-10.8%	13.1%	0.8%	-3.2%	10.9%	7.4%
23,145	Farranrory	-6.2%	4.9%	-1.7%	-7.4%	8.0%	0.0%	-4.7%	1.0%	-3.8%
23,146	Fennor	-6.3%	5.7%	-0.9%	-6.8%	5.8%	-1.4%	-5.7%	5.6%	-0.4%
23,147	Kilcooly	6.2%	-5.5%	0.3%	8.8%	-6.9%	1.4%	3.5%	-4.1%	-0.7%
23,148	Kilvemnon	4.4%	-2.1%	2.2%	3.0%	-2.0%	1.0%	6.0%	-2.2%	3.6%
23,149	Modeshil	1.9%	-4.8%	-3.1%	1.8%	-3.5%	-1.8%	1.9%	-6.4%	-4.5%
23,150	Mullinahone	2.7%	6.4%	9.3%	2.5%	4.3%	6.9%	2.9%	8.9%	12.1%
23,151	New Birmingham	-12.9%	21.7%	5.9%	-18.1%	18.7%	-2.8%	-6.7%	24.7%	16.3%
23,152	Poyntstown	-10.6%	3.2%	-7.7%	-1.8%	0.0%	-1.8%	-20.4%	7.7%	-14.3%

## Deprivation Indices

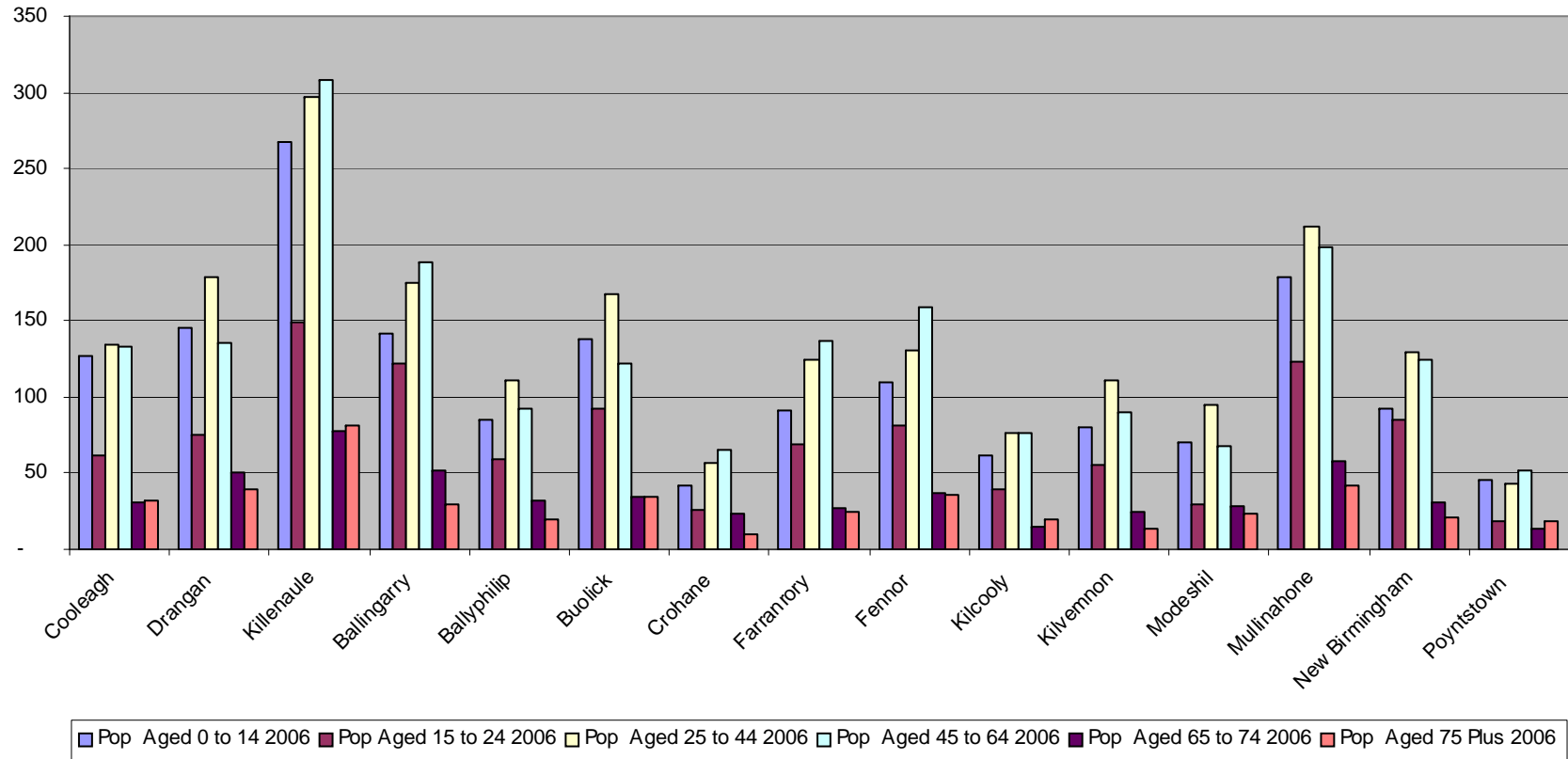
The 2006 Relative Deprivation Score for the County is 0.7, the score for the South East is 3.5, while the National score is 2.1. Farranrory (-19.6) is one of the five most disadvantaged EDs in the County, and the population centres of Killenaule (-4.4) and Ballingarry (-4.9), Mullinahone (-6.8), as well as those EDs with smaller numbers of people, such as New Birmingham (-8.1) and Poyntstown (-10.9) contribute to a picture of deprivation for the area as a whole. Some EDs within the areas, however, stand out as above average or affluent, for example, Cooleagh (12.4) and Drangan (5.9).

Killenaule and District		Absolute Index Scores				Change in Absolute Index Score 1991 - 2006	Relative Index Scores			
ID	ED	2006	2002	1996	1991		2006	2002	1996	1991
23,102	Cooleagh	17.7	14.1	11.8	9.6	8.1	12.4	7.5	9.8	9.6
23,103	Drangan	13.1	10.7	2.0	2.2	10.9	5.9	3.1	-0.4	2.2
23,109	Killenaule	5.7	1.5	-1.5	-3.8	9.6	-4.4	-8.3	-4.0	-3.8
23,141	Ballingarry	5.3	-0.7	-10.6	-11.2	16.6	-4.9	-11.1	-13.4	-11.2
23,142	Ballyphilip	5.9	5.5	2.7	-8.5	14.4	-4.1	-3.3	0.4	-8.5
23,143	Buolick	3.9	1.5	-7.4	-7.7	11.5	-6.9	-8.4	-10.1	-7.7
23,144	Crohane	11.2	11.5	6.4	6.6	4.6	3.3	4.2	4.2	6.6
23,145	Farranrory	-5.2	-5.7	-9.7	-9.2	4.0	-19.6	-17.3	-12.6	-9.2
23,146	Fennor	8.4	7.8	4.0	-3.3	11.7	-0.7	-0.4	1.8	-3.3
23,147	Kilcooly	6.7	7.7	0.1	-0.2	6.9	-3.0	-0.6	-2.3	-0.2
23,148	Kilvemnon	6.5	10.1	6.2	-1.0	7.5	-3.3	2.4	4.0	-1.0
23,149	Modeshil	8.0	13.0	5.1	0.2	7.8	-1.2	6.0	2.9	0.2
23,150	Mullinahone	4.0	2.8	-1.6	-6.3	10.3	-6.8	-6.7	-4.1	-6.3
23,151	New Birmingham	3.0	2.1	-7.3	-7.5	10.5	-8.1	-7.5	-10.0	-7.5
23,152	Poyntstown	1.0	1.1	0.7	-1.2	2.2	-10.9	-8.8	-1.8	-1.2

### Age Profile

Killenaule displays relatively high age dependency rates overall (34%) compared with the national rate of 31.4%. Graigue (41%) and Cloneen (37.8%) contribute to this figure, Cloneen displaying high numbers of children under the age of 15 years (24.9%), and Graigue showing high proportions of both children (25.7%) and people over 65 years (15.3%). Lisronagh has a rate of children under 15 years of 30.6% of the population, compared with the national average of 20.4%.

Age Profile Killenaule & District 2006



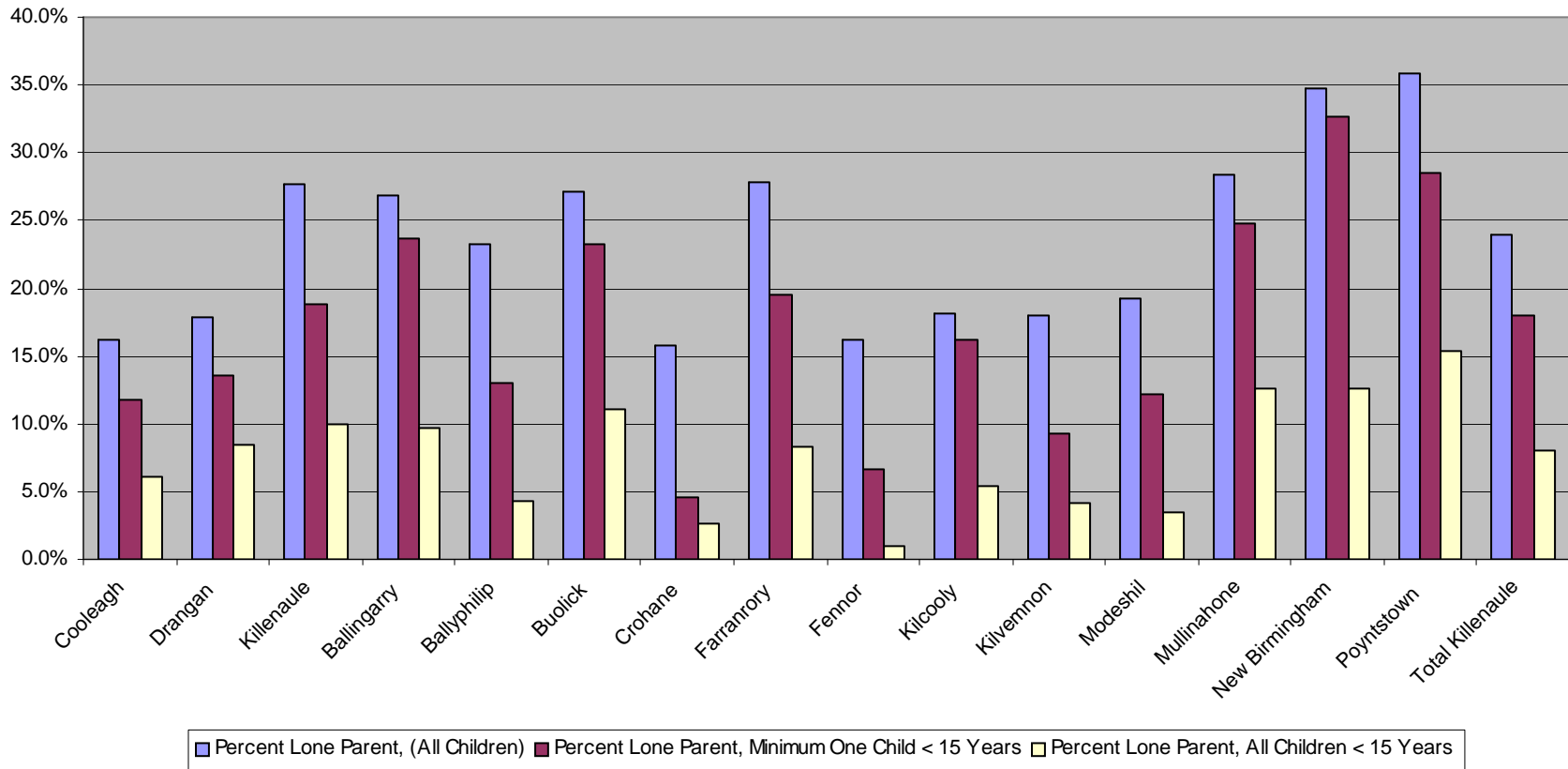
### Age Profile Killenaule and District 2006

<b>ED</b>	<b>Total Pop 2006</b>	<b>Pop Aged 0 to 14 2006</b>	<b>Pop Aged 15 to 24 2006</b>	<b>Pop Aged 25 to 44 2006</b>	<b>Pop Aged 45 to 64 2006</b>	<b>Pop Aged 65 to 74 2006</b>	<b>Pop Aged 75 Plus 2006</b>	<b>Pop Aged 0 to 14 2006 (%)</b>	<b>Pop Aged 15 to 24 2006 (%)</b>	<b>Pop Aged 25 to 44 2006 (%)</b>	<b>Pop Aged 45 to 64 2006 (%)</b>	<b>Pop Aged 65 to 74 2006 (%)</b>	<b>Pop Aged 75 Plus 2006 (%)</b>
Cooleagh	519	127	62	134	133	31	32	24.5%	11.9%	25.8%	25.6%	6.0%	6.2%
Drangan	625	146	75	179	135	51	39	23.4%	12.0%	28.6%	21.6%	8.2%	6.2%
Killenaule	1,180	267	149	297	308	78	81	22.6%	12.6%	25.2%	26.1%	6.6%	6.9%
Ballingarry	710	142	122	175	189	52	30	20.0%	17.2%	24.6%	26.6%	7.3%	4.2%
Ballyphilip	400	85	59	111	93	32	20	21.3%	14.8%	27.8%	23.3%	8.0%	5.0%
Buolick	588	138	92	167	122	35	34	23.5%	15.6%	28.4%	20.7%	6.0%	5.8%
Crohane	223	42	26	57	65	23	10	18.8%	11.7%	25.6%	29.1%	10.3%	4.5%
Farranrory	473	91	69	124	137	27	25	19.2%	14.6%	26.2%	29.0%	5.7%	5.3%
Fennor	554	110	81	131	159	37	36	19.9%	14.6%	23.6%	28.7%	6.7%	6.5%
Kilcooly	290	62	39	77	77	15	20	21.4%	13.4%	26.6%	26.6%	5.2%	6.9%
Kilvemnon	374	80	55	111	90	25	13	21.4%	14.7%	29.7%	24.1%	6.7%	3.5%
Modeshil	314	70	30	95	68	28	23	22.3%	9.6%	30.3%	21.7%	8.9%	7.3%
Mullinahone	813	179	123	212	199	58	42	22.0%	15.1%	26.1%	24.5%	7.1%	5.2%
New Birmingham	483	92	85	130	124	31	21	19.0%	17.6%	26.9%	25.7%	6.4%	4.3%
Poyntstown	191	45	19	43	52	14	18	23.6%	9.9%	22.5%	27.2%	7.3%	9.4%
<b>Total Killenaule</b>	<b>7,737</b>	<b>1,676</b>	<b>1,086</b>	<b>2,043</b>	<b>1,951</b>	<b>537</b>	<b>444</b>	<b>22.0%</b>	<b>14.0%</b>	<b>26.0%</b>	<b>25.0%</b>	<b>7.0%</b>	<b>6.0%</b>

## Lone Parents

The area of Killenaule and District displays relatively low rates of lone parent families as a proportion of all families with children. However, New Birmingham (34.7%) and Poyntstown (35.9%) have significantly higher rates of lone parent-headed families than either the County (26.3%) or nationally (25.2%), marking them out as areas with high numbers at risk of social exclusion.

Lone Parents Killenaule & District 2006



## Household Structure Killenaule and District 2006

<b>ED</b>	<b>Total Family Units With Children, All Children</b>	<b>Total Family Units Minimum One Child &lt; 15 Years</b>	<b>Lone Parent, All Children</b>	<b>Lone Parent, Minimum One Child &lt; 15 Years</b>	<b>Lone Parent, All Children &lt; 15 Years</b>	<b>Percent Lone Parent, (All Children)</b>	<b>Percent Lone Parent, Minimum One Child &lt; 15 Years</b>	<b>Percent Lone Parent, All Children &lt; 15 Years</b>
Cooleagh	99	68	16	8	6	16.2%	11.8%	6.1%
Drangan	118	81	21	11	10	17.8%	13.6%	8.5%
Killenaule	231	133	64	25	23	27.7%	18.8%	10.0%
Ballingarry	134	72	36	17	13	26.9%	23.6%	9.7%
Ballyphilip	69	46	16	6	3	23.2%	13.0%	4.3%
Buolick	118	69	32	16	13	27.1%	23.2%	11.0%
Crohane	38	22	6	1	1	15.8%	4.5%	2.6%
Farranrory	97	46	27	9	8	27.8%	19.6%	8.2%
Fennor	111	60	18	4	1	16.2%	6.7%	0.9%
Kilcooly	55	31	10	5	3	18.2%	16.1%	5.5%
Kilvemnon	72	43	13	4	3	18.1%	9.3%	4.2%
Modeshil	57	33	11	4	2	19.3%	12.1%	3.5%
Mullinahone	166	101	47	25	21	28.3%	24.8%	12.7%
New Birmingham	95	52	33	17	12	34.7%	32.7%	12.6%
Poyntstown	39	21	14	6	6	35.9%	28.6%	15.4%
<b>Total Killenaule</b>	<b>1,499</b>	<b>878</b>	<b>364</b>	<b>158</b>	<b>125</b>	<b>24.0%</b>	<b>18.0%</b>	<b>8.0%</b>

### Housing – Nature of Occupancy Killenaule and District 2006

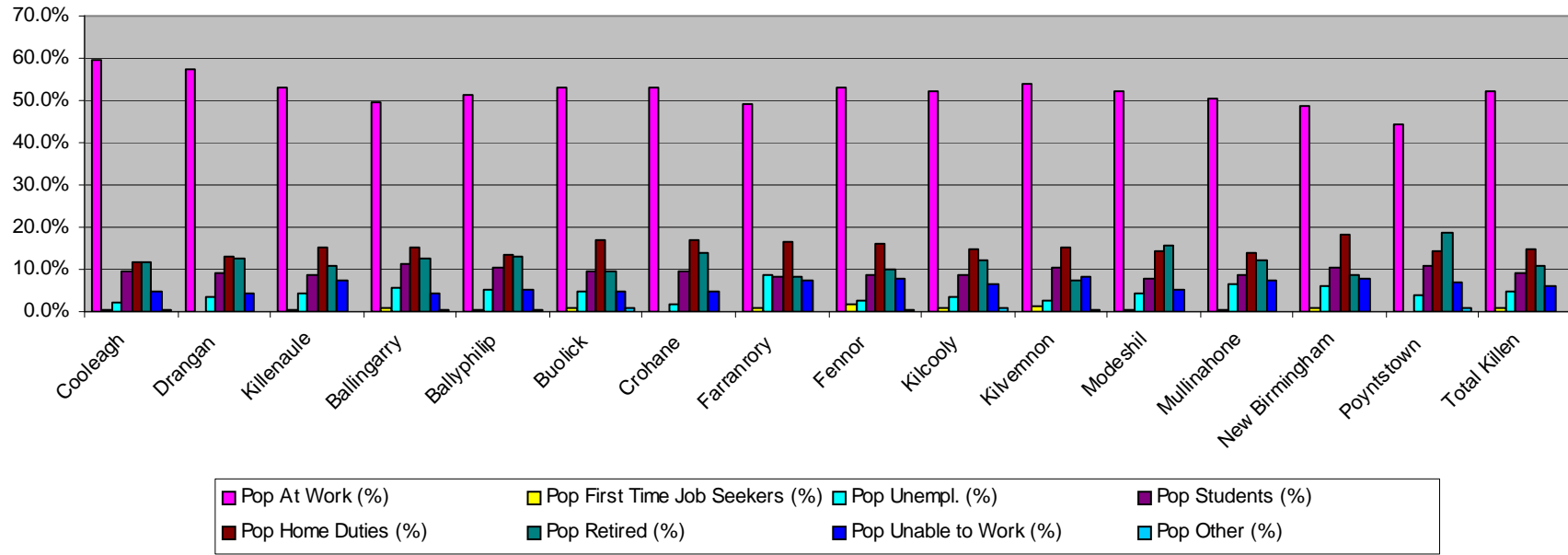
<b>ED</b>	<b>Total Permanent Private Households</b>	<b>Owner Occupied - with Mortgage</b>	<b>Owner Occupied - No Mortgage</b>	<b>Buying from Local Authority</b>	<b>Rented from Local Authority</b>	<b>Rented from Voluntary Body</b>	<b>Rented Unfurnished from Other</b>	<b>Rented Furnished from Other</b>	<b>Occupied Free of Rent</b>	<b>Not Stated</b>
Cooleagh	176	64	88	1	4	5	1	3	8	2
Drangan	208	75	96	5	17	2	-	2	9	2
Killenaule	401	138	149	9	40	21	7	10	11	16
Ballingarry	230	76	100	9	19	1	3	3	7	12
Ballyphilip	133	52	62	4	7	1	2	1	3	1
Buolick	192	70	84	6	19	4	-	5	1	3
Crohane	80	31	44	1	1	1	-	-	2	-
Farranrory	150	43	62	10	25	4	1	2	3	-
Fennor	181	69	97	1	3	1	1	2	3	4
Kilcooly	98	34	51	1	1	-	1	2	7	1
Kilvemnon	115	53	57	-	2	-	-	-	2	1
Modeshil	107	39	56	-	1	1	-	1	4	5
Mullinahone	289	84	116	3	34	13	4	11	9	15
New Birmingham	172	57	70	8	26	-	-	2	2	7
Poyntstown	75	19	40	1	8	-	1	1	1	4
<b>Total Killenaule</b>	<b>2,607</b>	<b>904</b>	<b>1,172</b>	<b>59</b>	<b>207</b>	<b>54</b>	<b>21</b>	<b>45</b>	<b>72</b>	<b>73</b>

## Unemployment

Unemployment rates have roughly halved in Ireland over the past fifteen years, with female unemployment rates slightly lower than those for males, but not falling at the same rate due to increasing labour force participation by females (with more women as a result registering their unemployment). Unemployment rates for South Tipperary have fallen at a slightly faster rate than nationally (-10.6% male/ -7.1% female compared to -9.6% male/ -6.0% female nationally), and are almost identical to the national rates in 2006 at 8.8% male unemployment and 8.2% female unemployment.

The labour force of Killenaule and District is 3,498 (2,195 males, 1,303 females), and its unemployment rate is 9.2%, making it slightly higher than the national average of 8.5%. The area has not been competitive in terms of increasing and sustaining jobs and there is a shortage of local employment opportunities. The graph below shows percentages of total population by economic status. Unemployment rates are at all other times given as numbers of unemployed plus first time job seekers as a percentage of the labour force.

### Economic Status Killenaule & District 2006

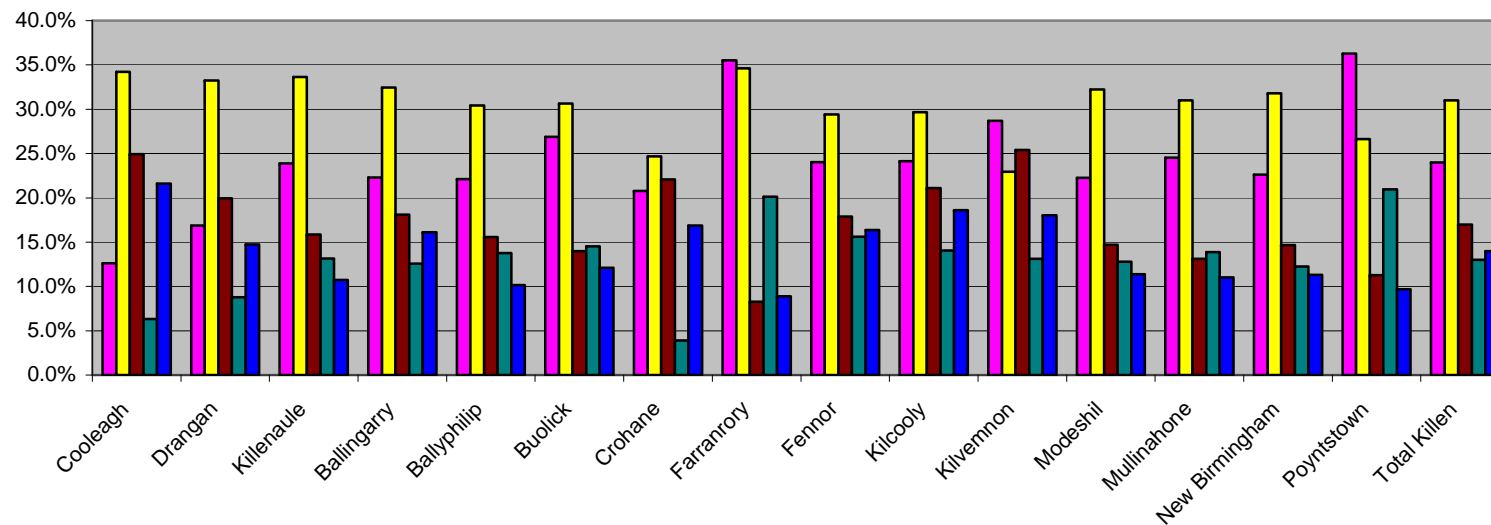


## Education

There has been continuous improvement in educational levels among adults over the past 15 years in Ireland, with the rates of those with primary education only dropping from 36.7% of the adult population in 1991 to half that level (18.9%) in 2006. The rate for South Tipperary has dropped from 37% in 1991 to 20.2% in 2006. The reverse applies to third level education which has risen dramatically, from a figure of 13% in 1991 to 30.5% in 2006. South Tipperary has not experienced the same level of growth, increasing from a level of 10.4% in 1991 to just 21.8% in 2006, leaving it way behind national average rates (11.4% compared with 17.4% nationally).

Education levels in Killenaule and District are markedly below national averages, with 24% of the population having no formal or primary education only, and just 17% having third level education. Figures for no formal or primary education only in the EDs of Poyntstown (36.3%) and Farranrory (35.5%) are particularly noticeable, while rates for third level education in these two EDs are concomitantly low, at 8.3% and 11.3% respectively. Cooleagh (12.6%) and Drangan (16.9%) are the only EDs where there are lower levels of no formal or primary education only than the national average, while none of the EDs in this area come close to the national average for third level education.

% Educational Attainment Killenaule 2006



■ Pop No Formal or Primary Education Only (%)
 ■ Pop Lower Secondary Education (%)
 ■ Pop 3rd Level Education (%)
 ■ Age Education Ceased < or = 15 (%)
 ■ Age Education Ceased > or = 20 (%)

### Killenaule & District Educational Attainment 2006

<b>ED</b>	Pop Education Ceased	Pop Education Ceased (Excl Not Stated)	Pop No Formal or Primary Education Only	Pop Lower Secondary Education	Pop Upper Secondary Education	Pop Technical or Vocational Education	Pop 3rd Level Education	Age Education Ceased < or = 15	Age Education Ceased > or = 20	Pop No Formal or Primary Education Only (%)	Pop Lower Secondary Education (%)	Pop Upper Secondary Education (%)	Pop Technical or Vocational Education (%)	Pop 3rd Level Education (%)	Age Education Ceased < or = 15 (%)	Age Education Ceased > or = 20 (%)
Cooleagh	340	333	42	114	64	30	83	21	72	12.6%	34.2%	19.2%	9.0%	24.9%	6.3%	21.6%
Drangan	425	421	71	140	87	39	84	37	62	16.9%	33.3%	20.7%	9.3%	20.0%	8.8%	14.7%
Killenaule	793	737	176	248	128	68	117	97	79	23.9%	33.6%	17.4%	9.2%	15.9%	13.2%	10.7%
Ballingarry	465	453	101	147	79	44	82	57	73	22.3%	32.5%	17.4%	9.7%	18.1%	12.6%	16.1%
Ballyphilip	277	276	61	84	55	33	43	38	28	22.1%	30.4%	19.9%	12.0%	15.6%	13.8%	10.1%
Buolick	384	372	100	114	63	43	52	54	45	26.9%	30.6%	16.9%	11.6%	14.0%	14.5%	12.1%
Crohane	161	154	32	38	27	23	34	6	26	20.8%	24.7%	17.5%	14.9%	22.1%	3.9%	16.9%
Farranrory	342	338	120	117	45	28	28	68	30	35.5%	34.6%	13.3%	8.3%	8.3%	20.1%	8.9%
Fennor	393	391	94	115	82	30	70	61	64	24.0%	29.4%	21.0%	7.7%	17.9%	15.6%	16.4%
Kilcooly	201	199	48	59	31	19	42	28	37	24.1%	29.6%	15.6%	9.5%	21.1%	14.1%	18.6%
Kilvemnon	256	244	70	56	40	16	62	32	44	28.7%	23.0%	16.4%	6.6%	25.4%	13.1%	18.0%
Modeshil	220	211	47	68	39	26	31	27	24	22.3%	32.2%	18.5%	12.3%	14.7%	12.8%	11.4%
Mullinahone	558	526	129	163	121	44	69	73	58	24.5%	31.0%	23.0%	8.4%	13.1%	13.9%	11.0%
New Birmingham	334	327	74	104	72	29	48	40	37	22.6%	31.8%	22.0%	8.9%	14.7%	12.2%	11.3%
Poyntstown	128	124	45	33	26	6	14	26	12	36.3%	26.6%	21.0%	4.8%	11.3%	21.0%	9.7%
<b>Total Killenaule</b>	<b>5,277</b>	<b>5,106</b>	<b>1,210</b>	<b>1,600</b>	<b>959</b>	<b>478</b>	<b>859</b>	<b>665</b>	<b>691</b>	<b>24.0%</b>	<b>31.0%</b>	<b>19.0%</b>	<b>9.0%</b>	<b>17.0%</b>	<b>13.0%</b>	<b>14.0%</b>

## 2.6.3 Local Consultation

### What does Social Inclusion mean to you?

- Participation – No exclusion
- Equal Rights with an emphasis on those most marginalised – Equality based
- Empowerment – decision making arenas
- Recognising the different aspects of exclusion
- Taking into account a rural context
- Access to services and resources – bridging the divide

### Killenaule – Key Needs at Local Geographic Level

Themes	Key Needs
<b>Childcare</b>	A lack of affordable childcare is seen as limiting education and employment opportunities across all target groups.
<b>Young People</b>	There is a general lack of facilities and services for young people. Lack of dedicated workers in the area – Fethard recently lost its youth worker although applications for another youth worker have gone in. Local people identified that they are beginning to see a rise in anti social behaviour
<b>Transport</b>	Ring-a-Link is in operation, however night time transport in the rural areas is particularly difficult. Transport difficulties have a huge impact on work and school journeys as well as impacting on the elderly and young target groups in terms of accessing social and necessary services and facilities.
<b>Employment</b>	Most people travel outside the area for work and this is affected by transport restrictions etc. There is a lack of a local employment strategy and enterprise culture for the area. Concerns were raised for low-income families regarding lack of employment and education and training opportunities and transport costs making it economically not viable to chase employment elsewhere
<b>Gardaí</b>	There is a lack of Garda presence across the area which impacts on feelings of safety as well as practical issues around crime for local shops etc.
<b>Isolation</b>	There is a huge sense of isolation issues, particularly amongst the elderly but recognised as existing across all ages and target groups.
<b>Broadband</b>	This is seen as vital for the area, both for employment and attraction of investment into the area and also as a

	social networking resource to combat isolation and increase communication.
<b>Social inclusion and Community Projects/Volunteers</b>	There is a huge strain on volunteers and existing SI groups. There is a lack of local projects across the areas – general lack of supports, programmes and volunteers. Effort involved in trying to access and account for funding for initiatives is huge and wearying. The State is viewed as not engaging fully with the community sector.
<b>Geographic spread of villages and hamlets</b>	Overall, it was suggested that Killenaule needed to develop its own identity and pride as a larger area. That small areas being linked together would provide greater support and attract in greater resources and attention.

### Killenaule – Key Needs by Target Group

<b>Target Group</b>	<b>Themes and Issues Arising</b>	<b>Identified Needs</b>
<b>Long Term Unemployed</b>	There is huge variation across the different categories of people who are technically unemployed e.g. staying at home to care for an elderly relative etc. High number of men over 50 years of age who will realistically never work again – state “ageism” regarding eligibility of these men on C.E. Schemes. There is poor take up of the Rural Social Scheme – many farmers are too proud to go on schemes	<ul style="list-style-type: none"> <li>a) Gain more information on what is available for long term unemployed people and what they need (Audit)</li> <li>b) Link to county and regional strategies for employment progression including exploring incentives to employers to employ local people, up skilling and retraining options</li> <li>c) Explore other issues and needs around employment impacts such as the poverty trap, health etc.</li> <li>d) Develop local enterprise culture</li> <li>e) Awareness raising of allowances and entitlements and supports available to unemployed and under-employed.</li> <li>f) Affordable childcare options</li> </ul>
<b>Low Income Individuals and Families</b>	Key themes emerging for this target group centre on a lack of opportunities to progress into employment and training/education – see needs identified in the above category also. There is a lack of employment opportunities in general in the rural areas – transport issues limit the take-up of employment opportunities in other areas in the county and the lack of local jobs prohibits motivation to seek employment.	<ul style="list-style-type: none"> <li>a) Increased local education and training opportunities</li> <li>b) Increased information and awareness raising of available supports</li> <li>c) Desperate need to provide services on an outreach basis within the area instead of dependency on having to access urban</li> </ul>

	<p>There is a huge lack of services and supports in the areas e.g. MABS, LES, Jobs Clubs, Family Supports.</p> <p>Anecdotal information would suggest that there are people in the outlying areas that still have no PPS Number – this is borne out by concerns raised by Medical Practitioners in accessing treatment for some patients via medical cards.</p>	<p>centres.</p> <p>d) Flexible transport options</p> <p>e) Greater input from FAS regarding services, training programmes etc.</p>
<p><b>Women who are Socially and Economically Disadvantaged</b></p>	<p>Among the key issues emerging for this target group included the increased isolation and sense of being “trapped” in the home of older women caring for grandchildren and younger women caring for elderly parents/relatives. It emerged that a number of women are not registered for supports/allowances etc.</p> <p>Limited services around childcare and transport also act as significant barriers for this target group.</p>	<p>a) Affordable childcare</p> <p>b) Accessible and affordable pre-school and after school services</p> <p>c) Opportunities for part time/job share employment opportunities and flexible training and education opportunities where identified.</p>

#### Killenaule – Key Needs by Target Group

Target Group	Themes and Issues Arising	Identified Needs
<p><b>Lone Parents who are Socially and Economically Disadvantaged</b></p>	<p>Issues for this target group mirror those for Women who are Socially and Economically Disadvantaged in many respects.</p> <p>Whilst the Vincent de Paul organisation works extensively with this target group there are no structured/organised services, no Mother and Toddler group, no return to education opportunities etc. There is a lack of affordable childcare, transport issues, certain amount of stigma and a general lack of progression opportunities and strategies for this target group. In many cases, young women are trapped in the house minding several children all day with no other outlets.</p>	<p>a) Affordable childcare</p> <p>b) Access to services at local level e.g. Adult Guidance.</p> <p>c) Flexible training courses with realistic progression routes</p> <p>d) Access to Education opportunities i.e. VTOS etc</p> <p>e) Recognition of need for counselling and family supports i.e. parenting supports, mentoring approaches, etc</p>
<p><b>Travellers</b></p>	<p>There are approximately 7 settled families in the area with 4/5 transient families with whom there is little or no contact. Early School Leaving, crime and drug-use are seen as major factors for this community together with a need for employment supports and progression routes. Literacy is a huge barrier for opportunities amongst this community.</p>	<p>a) Provision of retention initiatives within the schools.</p> <p>b) Literacy supports and supports such as homework clubs etc.</p> <p>c) Early interventions to combat early</p>

		school leaving
<b>Disabled People</b>	Key issues centre on equality of access to services and supports. The effort required to access individual supports in terms of categories of disability etc is wearying and a huge barrier to quality of life and opportunities. It was identified that huge anomalies at national level impact at a local level in terms of establishing and sustaining relevant community based supports.	<ul style="list-style-type: none"> <li>a) Employment strategies to reduce barriers e.g. part time working</li> <li>b) Information and advocacy services e.g. grant applications, local services and support availability etc.</li> <li>c) Strategies around early intervention – parents of children with disabilities to receive immediate support to begin maximum assistance throughout the life cycle.</li> </ul>
<b>Disadvantaged Youth, Including Unemployed and Early School Leaving</b>	(Referenced also under “Needs, Geographical and Social”) There is no Youth club or Youth Reach across the area. All services relating to young people are sited within Clonmel and other urban areas – these prove prohibitive in terms of cost, transport and accessibility. There has been an increase in the numbers of teenage pregnancies, drug-use and Early School leaving. The Killenaule area falls within the catchment of a School Completion Programme	<ul style="list-style-type: none"> <li>a) Targeted resources for the roll out of national programmes and Education supports, particularly targeted at further education/training and employment progression such as childcare supports for young mothers to access education and the development of locally based apprenticeships etc</li> <li>b) Leisure and Social facilities for young people</li> <li>c) Awareness-raising and information services</li> <li>d) A dedicated Youth Project is badly needed for the area.</li> </ul>

#### Killenaule – Key Needs by Target Group

Target Group	Themes and Issues Arising	Identified Needs
<b>Older People who are Socially and</b>	There are some Active Retirement Groups delivering a range of activities. There is also a Day Centre in Fethard. Groups working with the elderly are exhausted with the growing bureaucracy and administrative responsibilities	<ul style="list-style-type: none"> <li>a) Transport links and provision to combat isolation and increase access to services.</li> <li>b) Supports to groups working with this target</li> </ul>

<b>Economically Disadvantaged</b>	around applying and accounting for relatively small amounts of funding. Funding is not sustainable Transport limitations impact severely on this target group and isolation is an identified problem for many elderly people.	group and sustainable funding strategies for such groups and Day Care Centres c) Specific anti-isolation strategies
<b>Homeless People</b>	Homelessness is relatively hidden but does exist across the rural areas. There are instances of people sleeping in barns/caravans etc (anecdotal evidence) as well as those living at home with parents through a lack of affordable housing. Accommodation is a particular issue for single people and the process of getting on the housing list is very onerous. Mental health issues are prevalent across this target group and homelessness is often the end result of other issues and problems such as domestic violence	a) Raise awareness of homeless and its rural characteristics – feasibility study is possibly required and links to County Council Housing strategies which are focussing on targeting those most vulnerable – this focus to be extended to include those people on Local Authority waiting lists and beyond, not just those in Local Authority housing. b) Provide information and outreach supports to work with those who fall into this category and try to link them to other services
<b>Drug Mis-users</b>	South Tipperary Drug Outreach Service operates a support service. Residential care supports or acute beds are viewed as not being accessible in this area. Secondary schools are being targeted for “hard” drugs and the area is being used as a drop-off point for drug dealers. Families of drug and alcohol dependents also need supports. The economic burden on families trying to access treatment for their relatives is extremely onerous and results in many people not receiving treatment or a prevalence of debt – this in turn leads to an increased emotional and social burden on the service user and the family. Alcohol is a big issue particularly for those who are isolated – including small farmers, older men living in remote areas and foreign nationals living here without family supports.	a) Local or easily accessible facilities – treatment, rehabilitation and drop-in centres b) Links to county and regional programmes and pilots including Gardaí initiatives. c) Community-based Drugs Initiatives/Drugs Task Force type coverage of regional programmes into the local areas d) Education initiatives – prevention of drug/alcohol use e) Alternative social outlets to drinking

#### Killenaule – Key Needs by Target Group

Target Group	Themes and Issues Arising	Identified Needs
<b>Refugees, Asylum</b>	There is a lack of English Language classes and supports. Problems with communication have a direct impact on access to employment	a) English Language classes and supports b) Awareness raising initiatives regarding the

<b>Seekers and immigrants And Migrant Workers</b>	<p>opportunities – this target group is heavily vulnerable to exploitation i.e. lack of employment supports and poor working conditions. (See also Homeless People)</p>	<p>diverse range of traditions and customs. c) Employment supports</p> <p>These two target groups are seen as hugely multi-disadvantaged with a number of issues including communication barriers, separation from family members (isolation and depression), problems getting visas for family members, accommodation problems etc. Whilst there is not a large African population in the area there are significant numbers of Eastern European (Polish predominantly) and Brazilians.</p>
<b>Ex-Prisoners</b>	<p>It would appear to be difficult to ascertain numbers of ex-prisoners/offenders in the area – stigma would play a part in keeping those figures “hidden”.</p> <p>Key themes emerging for this target group centre on a lack of access to supports and education/training/employment opportunities due to stigma. It was identified that there is a good Probation Service but a general lack of Social Work interventions.</p> <p>There is no evidence of mentoring or tracking supports for ex-prisoners and a recognition of the cycle of re-offending (revolving door syndrome), often due to the lack of progression and mentoring supports available.</p>	<p>a) Ex-Offenders programmes b) Integrated supports for transition from prison to the community – options etc c) Expansion of the dedicated JLO service for prevention of offending for young people – Juvenile Prevention programme. d) Commitment from state agencies and employers regarding real, sustainable employment opportunities e) Recognition of need for Social and Family supports.</p>
<b>Lesbian and Gay People who are Socially and Economically Disadvantaged</b>	<p>Main issues for this group centre on stigma and a lack of supports and information services. In addition there are no supports for the families and parents of young Gay and Lesbian people. Coming Out in a rural area is difficult – potentially open to ridicule etc. Many local people at the consultation meeting said they knew of lesbian and gay couples/individuals and felt that society was more tolerant of this target group than hitherto – however, there was a consensus that issues relating to this target group were not discussed particularly and that awareness raising interventions would increase such debate and remove stigma.</p>	<p>a) Needs Analysis b) Anti-isolation strategies c) Awareness-raising initiatives to combat prejudice and stigma</p>

